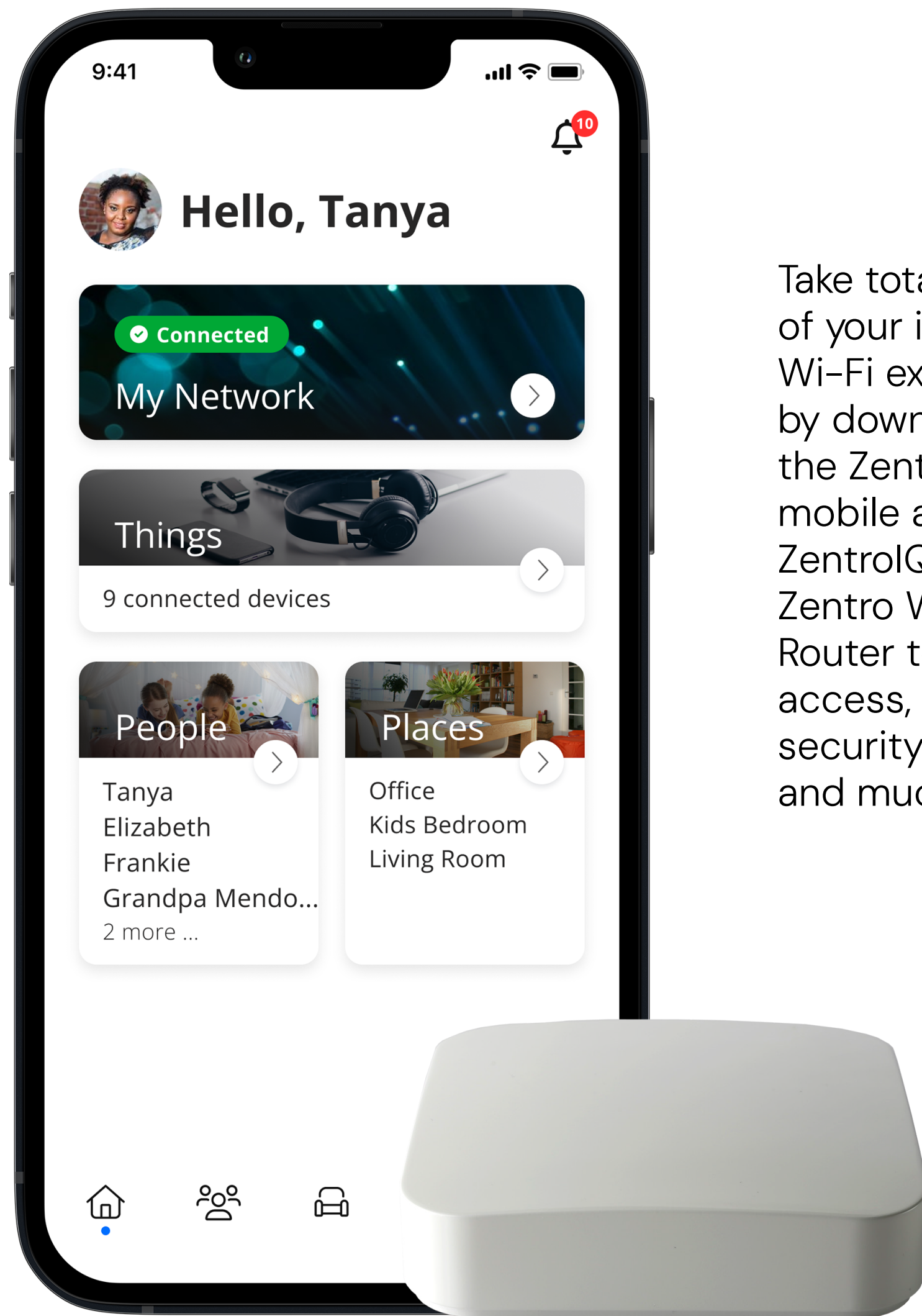




Quick Start Guide: Setting up your Wi-Fi and App

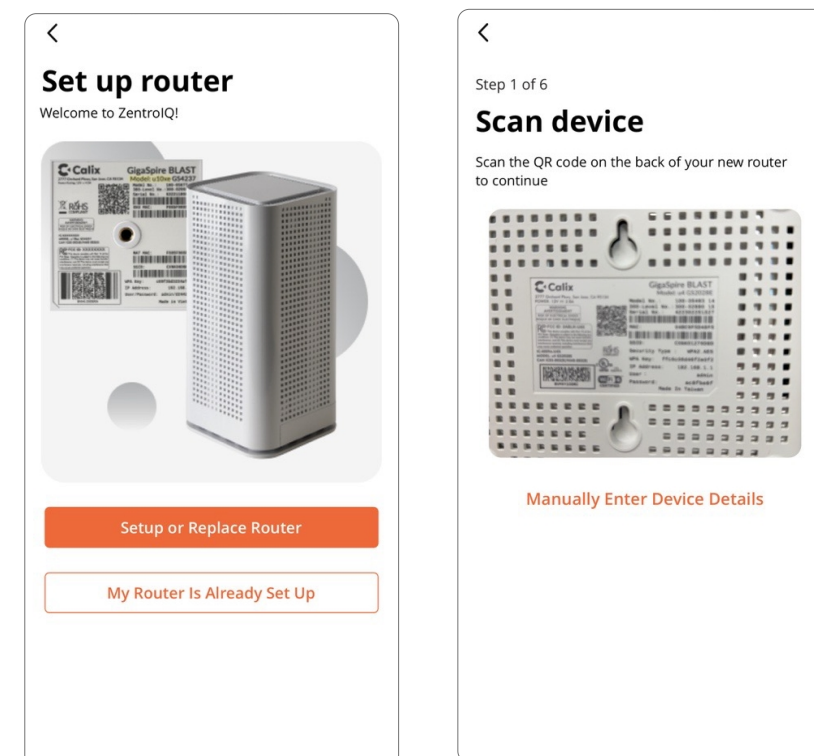


Take total control of your in-home Wi-Fi experience by downloading the ZentroIQ mobile app. Pair ZentroIQ with the Zentro Wi-Fi Router to control access, manage security settings, and much more.

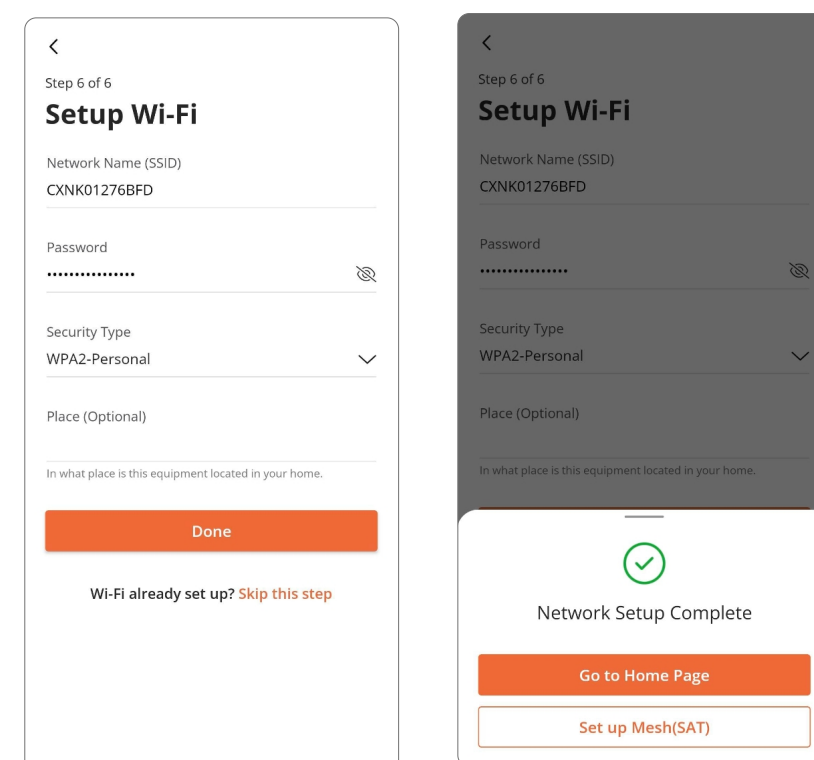
1. Download the app. You can search either the Apple App Store or Google Play Store for: 'ZentroIQ®', then install it on your mobile device. Select 'Sign Up' or 'Log In' to set up your router.



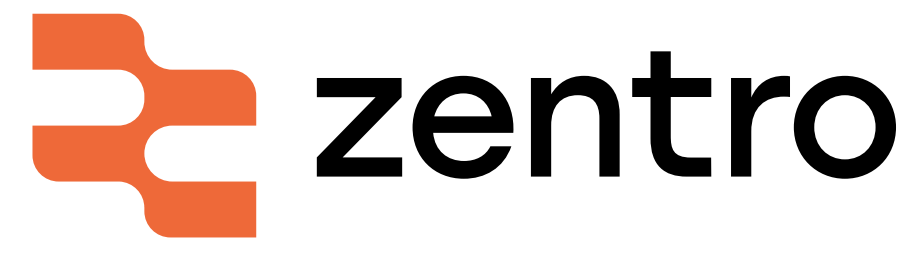
2. Select "Setup or Replace Router" and scan your device. Follow the in app prompts for new router set up.



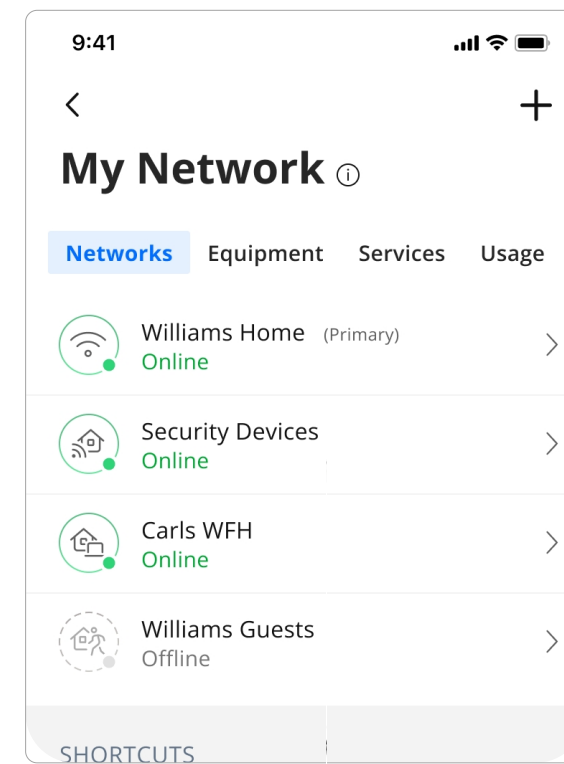
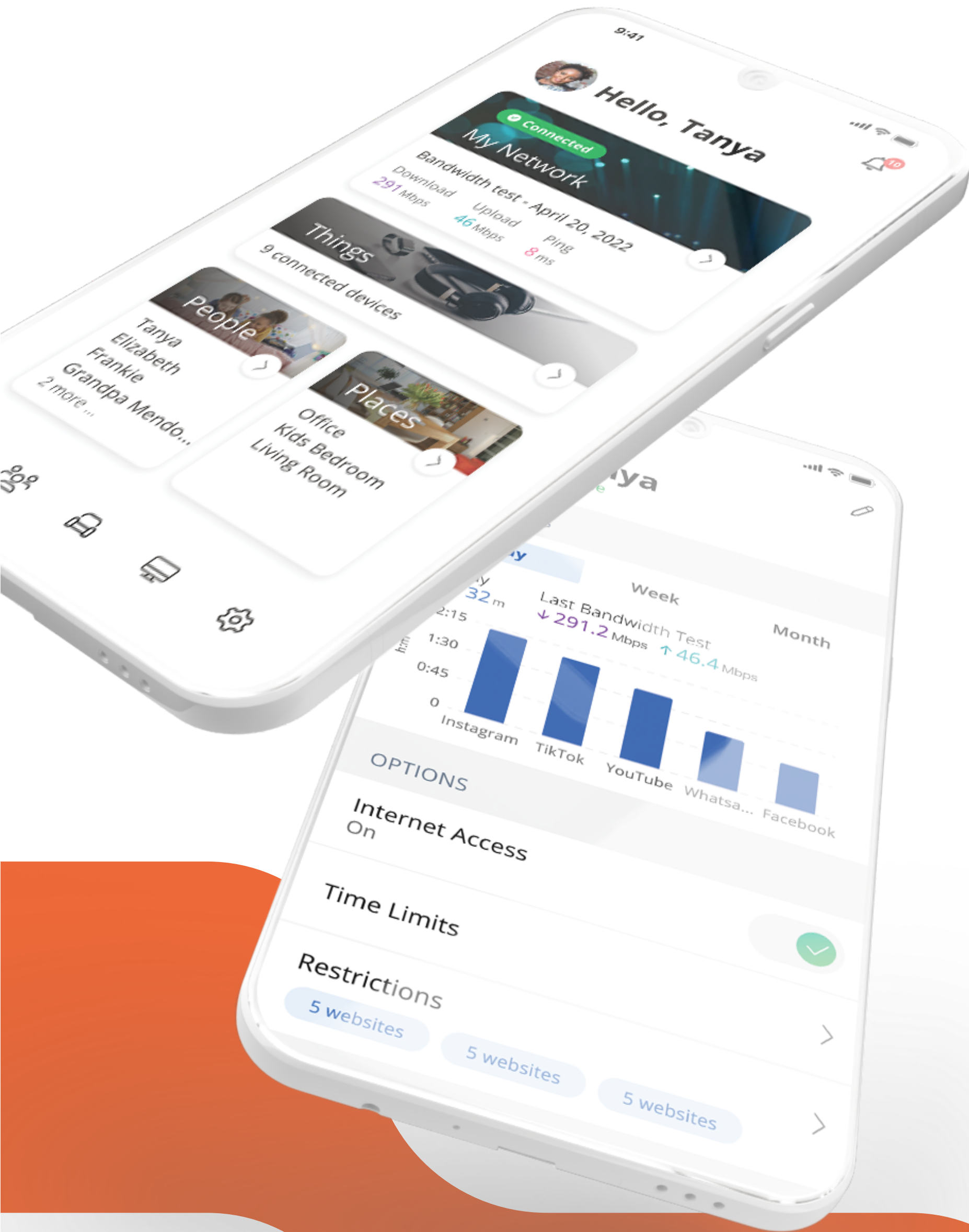
3. Now that your new router is set up, you can enjoy Enlightening Fast Internet.



Need Help? Contact Support
877-Zentro-1
zentrointernet.com/support

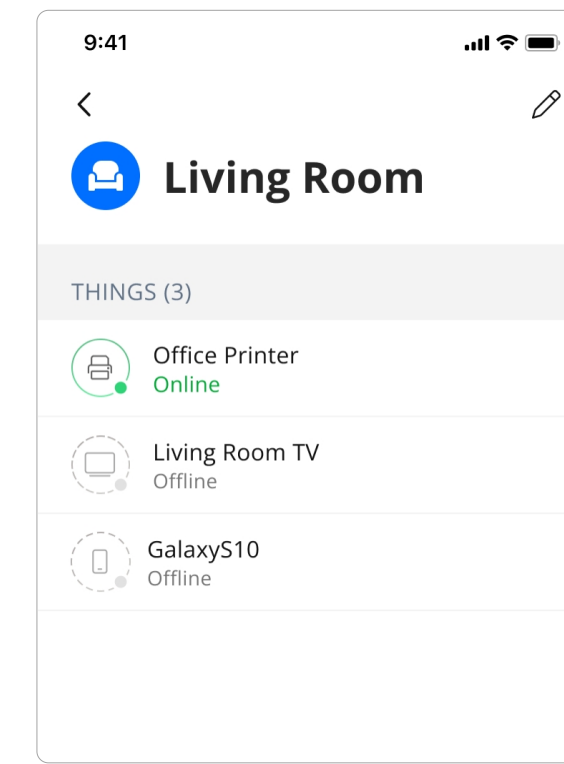


Manage and control every aspect of your connected experience with ZentrolQ App



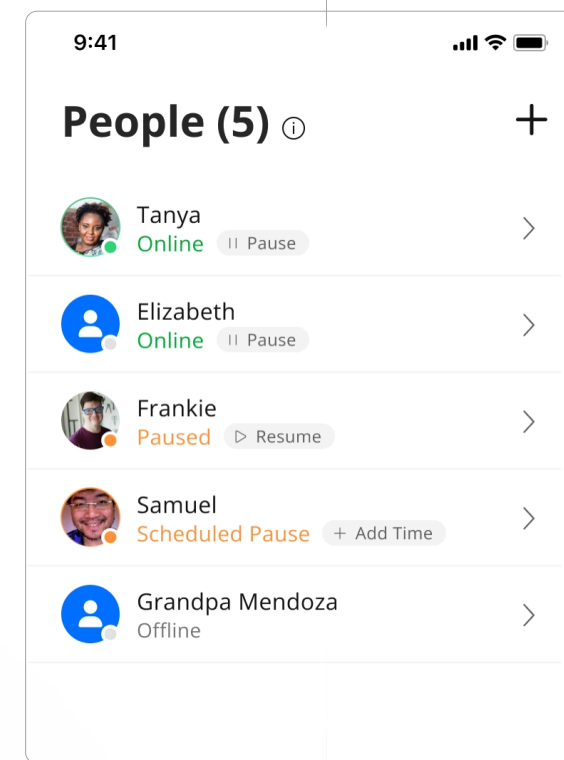
View Your Home

See devices and usage, equipment, and change your network name and password.



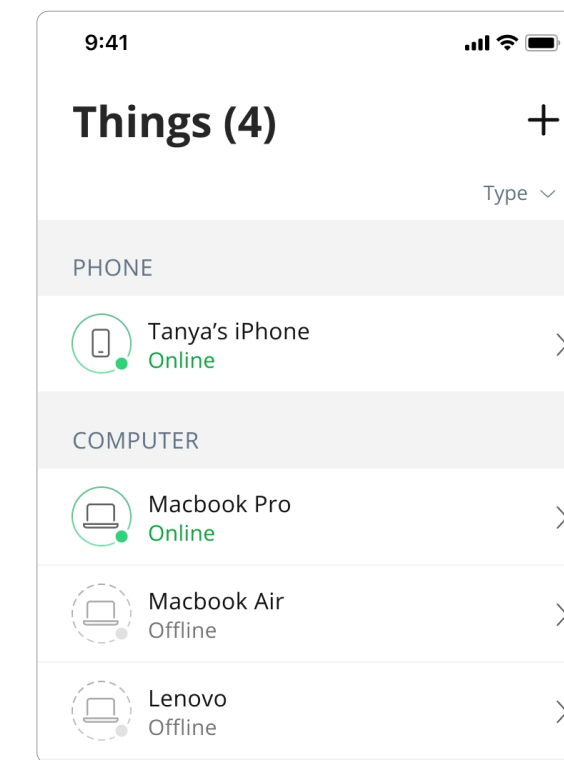
Create Places

Add devices to each room of your home and manage the room's Wi-Fi.



Create Profiles

Set controls across all devices assigned to your family.



Control Your Devices

View, rename, manage, and turn on/off devices.

Get to Know the ZentrolQ App in this short demo

